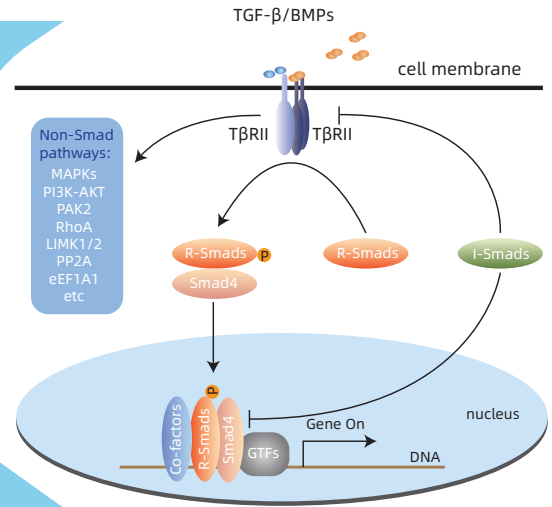


TGF-β信号转导通路

转化生长因子-β (TGF-β) 超家族信号转导在众多生物系统中对细胞生长、分化和发育过程中发挥重要调控作用。其生物学调控主要特点如下：

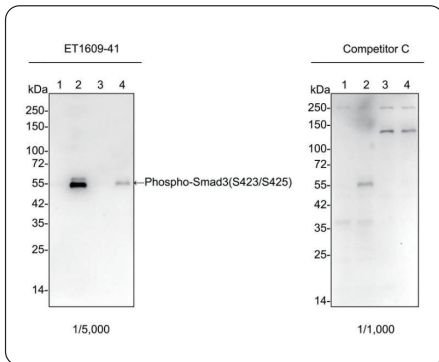
- 1、激活的Smads通过与下游转录因子结合，调控不同的生物学功能；
- 2、抑制性Smads的表达受activin/ TGF-β和BMP信号共同诱导，并参与部分负反馈调控机制；
- 3、Smads的稳定性由Smurf E3和USP4/11/15共同调节；
- 4、在某些激酶信号调控下（如Erk, SAPK/JNK, p38 MAPK），TGF-β信号传导也可以影响Smad非依赖通路。



验证数据

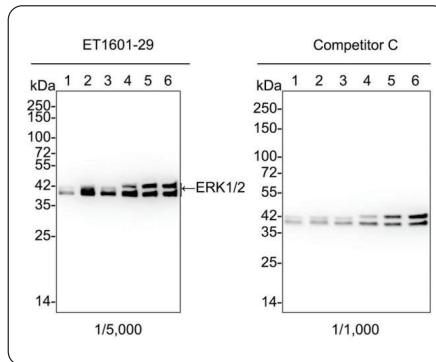
Phospho-Smad3(S423/S425) Recombinant RabMab | ET1609-41

应用：WB,IF-Cell,IF-Tissue,IHC-P
反应性：Mouse,Human



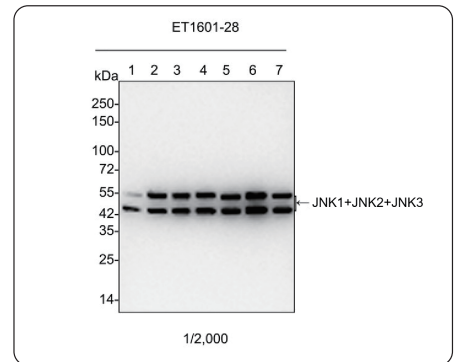
ERK1/2 Recombinant RabMab | ET1601-29

应用：WB,IF-Cell,IF-Tissue,IP,FC,IHC-P,IHC-Fr
反应性：Human,Mouse,Rat,Zebrafish



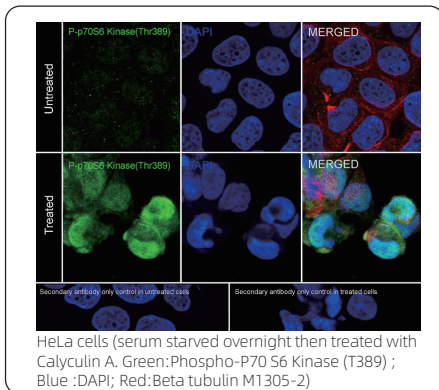
JNK1+JNK2+JNK3 Recombinant RabMab | ET1601-28

应用：WB,IF-Cell,IF-Tissue,IHC-P,IP
反应性：Human,Mouse,Rat, Cow,Monkey, Zebrafish



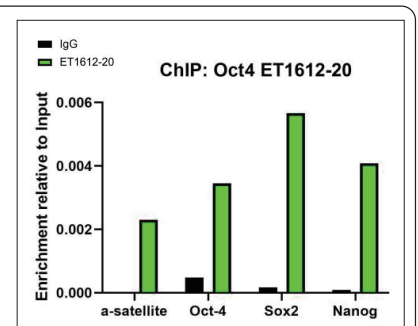
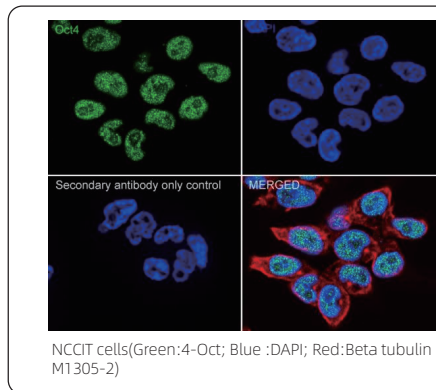
Phospho-P70 S6 Kinase (T389) Recombinant RabMab | HA721803

应用：WB,IF-Cell,IHC-P
反应性：Human,Mouse,Rat



Oct4 Recombinant RabMab | ET1612-20

应用：WB,IF-Cell,IF-Tissue,IHC-P,IP,ChIP,FC
反应性：Mouse,Human



TGF-β通路——精选产品清单



更多精选产品“码”上查询

	Product name	Catalog#	Species reactivity	Tested applications
KO	Smad1	ET1607-42	Human,Mouse	WB,IF-Cell,IF-Tissue,IHC-P
KO	Smad2	ET1604-22	Human,Mouse,Rat	WB,IF-Cell,IHC-P,IP,FC
	MADH7/Smad7	ER1912-61	Human,Mouse,Rat,Pig,Cow	WB,ELISA,IHC-P,FC,IF,ICC
	Phospho-Smad2 (S250)	ET1612-32	Human,Mouse,Rat	WB,FC
	Phospho-Smad2(S255)	ET1702-34	Mouse,Human,Rat	WB,IHC-P,IP
KO	Smad3	ET1607-41	Human,Mouse,Rat	WB,IF-Cell,IF-Tissue,IHC-P,FC
BM	Phospho-Smad3(S423/S425)	ET1609-41	Human,Mouse	WB,IF-Cell,IF-Tissue,IHC-P
KO	Smad4	ET1604-12	Human,Mouse,Rat	WB,IF-Cell,IF-Tissue,IHC-P,FC
	Smad6	EM1709-56	Human	WB
	Smad5	ET1606-26	Human,Mouse,Rat	WB,IF-Cell,IHC-P,FC
	Phospho-Smad5(S463/465)	ET1605-5	Human,Mouse,Rat	WB,IF-Cell,IHC-P
	c-Jun	ET1608-3	Human,Mouse,Rat	WB,IF-Cell,IHC-P,IP
	Phospho-c-Jun(S63)	ET1608-4	Human,Mouse,Rat	WB,IF-Cell,IHC-P
KO	NF-κB p65	ET1603-12	Human,Mouse	WB,IF-Cell,IF-Tissue,IHC-P,IP,FC
	Phospho-NF-κB p65(S529)	ET1604-27	Human	WB,IHC-P,FC,IP
KO	STAT3	ET1607-38	Human,Mouse,Rat,Zebrafish	WB,IF-Cell,IF-Tissue,IHC-P,IP
BM	Phospho-STAT3(Tyr705)	ET1603-40	Human,Mouse,Rat	WB,IHC-P,IP
KO	Oct4	ET1612-20	Human,Mouse	WB,IF-Cell,IF-Tissue,IHC-P,IP,ChIP,FC
	SOX2	HA721155	Human,Mouse,Rat	IHC-P,WB,IF-Cell,ChIP
BM, KO	RUNX2	ET1612-47	Human,Mouse,Rat	IF-Cell,IF-Tissue,IHC-P,WB,FC
	FOXP3	ET1702-12	Human	WB,IF-Cell,FC
	14-3-3	ET1701-2	Human,Mouse,Rat	WB,IHC-P
	c-Myc	HA721182	Human	WB,IHC-P
	Phospho-c-Myc(S62)	ET1609-64	Human,Mouse,Rat	WB,IF-Cell,IF-Tissue,IHC-P,IP
	Phospho-c-Myc(T58)	ET1611-24	Human,Mouse,Rat	WB,IF-Cell,IF-Tissue,FC,IHC-P
	Phospho-c-Myc (T58+S62)	ET1603-24	Human,Mouse	WB,IP,FC
	TGF beta 1	HA721143	Human,Mouse,Rat	WB,IHC-P,IF-Tissue
	AKT1/2/3	ET1609-51	Human,Mouse,Rat	WB,IF-Cell,IF-Tissue,IHC-P,IP,FC,IHC-Fr
	Phospho-Akt(Ser473)	ET1607-73	Human,Mouse,Rat	WB,IF-Cell,IF-Tissue,IHC-P,IHC-Fr
BM, KO	ERK1/2	ET1601-29	Human,Mouse,Rat,Zebrafish	WB,IF-Cell,IF-Tissue,IP,FC,IHC-P,IHC-Fr
	Phospho-Erk1(T202)+Erk2(T185)	ET1603-22	Human,Mouse,Rat	WB,IF-Cell,IHC-P,FC
BM	Phospho-Erk1 (T202/Y204) + Erk2 (T185/Y187)	ET1610-13	Human,Rat,Mouse	WB,IP,IHC-P
BM	mTOR	ET1608-5	Human,Mouse,Rat	WB,IHC-P,IP,IF-Cell
	Phospho-mTOR (S2448)	HA600094	Human,Mouse,Rat	WB,IHC-P
	PI 3 Kinase p85 alpha	ET1608-70	Human,Mouse,Rat	WB,IF-Cell,IF-Tissue,IHC-P,FC
	PI 3 Kinase p55 gamma	ET1602-27	Human,Mouse,Rat	WB,IF-Cell,IF-Tissue,IHC-P
	PKC alpha	ET1608-15	Human,Mouse,Rat	WB,IF-Cell,IF-Tissue,IHC-P,FC,IP
	Phospho-PKC alpha (T638)	ET1702-17	Human,Mouse,Rat	WB,IF-Cell,IF-Tissue,IHC-P,IP
KO	p38	ET1702-65	Human,Mouse,Rat	WB,IF-Cell,IF-Tissue,IHC-P,FC
	Phospho-P38 (Thr180 + Tyr182)	ER2001-52	Human,Rat,Mouse	WB
BM	JNK1+JNK2+JNK3	ET1601-28	Human,Mouse,Rat,Cow,Monkey,Zebrafish	WB,IF-Cell,IF-Tissue,IHC-P,IP
	Phospho-JNK1/2/3(T183+T183+T221)	ET1609-42	Human,Mouse,Rat	WB,IF-Cell,IF-Tissue,IHC-P,IP,FC,IHC-Fr
	TAK1	ET1705-14	Human,Mouse	WB,IF-Cell,IF-Tissue,IHC-P,FC
	P70 S6 Kinase beta	HA721354	Human,Mouse	WB,IF-Cell,FC,IHC-P
BM	Phospho-P70 S6 Kinase (T389)	HA721803	Human,Mouse,Rat	WB,IF-Cell,IHC-P
	PP2A alpha + beta	ET1611-54	Human,Mouse,Rat,Zebrafish	WB,IF-Cell,IHC-P,IP
	RhoA	ET1611-10	Human,Mouse,Rat	WB,IF-Cell,IF-Tissue,FC
	Ras	HA721883	Human,Mouse,Rat	WB,IF-Cell,FC
	CDC42	ET1701-7	Human,Mouse,Rat	WB,IHC-P,IP,FC
	SOS1	HA720077	Human,Mouse,Rat	WB
	TRAF6	R1311-2	Human,Mouse,Rat,Chicken	IF-Cell,IHC-P,WB
	HDAC4	ET1612-51	Human	WB,IF-Cell,IF-Tissue

* KO: Knockout validated; BM: Bench Mark validated