

# 华安金标抗体

金标验证  
品质可靠

- 让研究变得简单 -

华安生物提供的金标抗体是指将市场高需求抗体产品的主流应用与竞品进行平行质量检测验证，主要涵盖神经科学，免疫炎症，细胞生物学，表观遗传等热门研究领域。

## 热销金标产品推荐



产品名称	货号	反应种属	检测应用
<b>神经科学</b>			
* Beta III Tubulin	M0805-8	Human, Mouse, Rat	WB, IF-Cell, IHC-P, FC, IF-Tissue
BRG1	ET1611-85	Human, Mouse, Rat	WB, IF-Cell, IF-Tissue, IHC-P, IP, FC, IHC-Fr
GABA B Receptor 1	HA722053	Human, Mouse, Rat	WB, IF-Tissue, IHC-P
GAP43	ET1610-94	Human, Mouse, Rat	WB, IF-Cell, IF-Tissue, IHC-P, FC, IP
Phospho-GSK3 beta (Ser 9)	ET1607-60	Human, Mouse, Rat	WB, IF-Cell, IF-Tissue, IHC-P
Vimentin	ET1610-39	Human, Mouse, Rat	WB, IF-Cell, IF-Tissue, IHC-P, IP, FC, IHC-Fr
<b>表观遗传学</b>			
HDAC1	ET1605-35	Human, Mouse, Rat	WB, IHC-P, IF-Cell, IP
HDAC2	ET1607-78	Human, Mouse, Rat	WB, IF-Cell, IF-Tissue, IHC-P, IP, FC
Phospho-Histone H3 (S10)	ET1601-30	Human, Mouse, Rat	WB, IF-Cell, IF-Tissue, IHC-P, IP, FC
Histone H3 (acetyl K4)	HA722035	Human, Mouse, Rat	WB, IF-Cell, ChIP, Dot Blot
Histone H3 (acetyl K9)	HA722132	Human, Mouse, Rat	WB, IF-Cell, IHC-P, IF-Tissue, FC, ChIP, Dot Blot, IP
Histone H3 (tri methyl K27)	HA722231	Human, Mouse, Rat	WB, IF-Cell, IHC-P, IF-Tissue, ChIP
<b>癌症研究</b>			
ATG4B	HA721829	Human, Mouse, Rat, Monkey	WB
LC3B	ET1701-65	Human, Mouse, Rat	WB, IP, IF-Cell, IHC-P
MUC1	ET1611-14	Human, Mouse, Rat	WB, IF-Cell, IF-Tissue, IHC-P, FC, IP
NDUFV2	HA721869	Human, Mouse, Rat	WB, IHC-P, IF-Cell
Neuropilin 1	ET1609-69	Human, Mouse, Rat	WB, IF-Cell, IF-Tissue, IHC-P, IP
PML Protein	HA721877	Human	WB, IHC-P, IF-Cell, FC
<b>细胞生物学</b>			
BAX	ET1603-34	Human, Mouse, Rat, Goat	WB, IP, FC
Caspase-3	ET1602-39	Human	WB, IF-Cell, IF-Tissue, IHC-P, IP, FC
Cyclin D1	ET1601-31	Human, Mouse, Rat	WB, IF-Cell, IF-Tissue, IHC-P, IP, FC
E-Cadherin	ET1607-75	Human	WB, IF-Cell, IF-Tissue, IHC-P, FC, IP
GPX4	ET1706-45	Human, Mouse, Rat, Zebrafish	WB, IHC-P, IF-Cell
mTOR	ET1608-5	Human, Mouse, Rat	WB, IHC-P, IP, IF-Cell
<b>信号传导</b>			
Phospho-MLKL (S345)	ET1705-51	Mouse	WB, IHC-P
Phospho-Smad3 (S423 + S425)	ET1609-41	Human, Mouse	WB, IF-Cell, IF-Tissue, IHC-P
Phospho-STAT3 (Tyr705)	ET1603-40	Human, Mouse, Rat	WB, IHC-P, IP

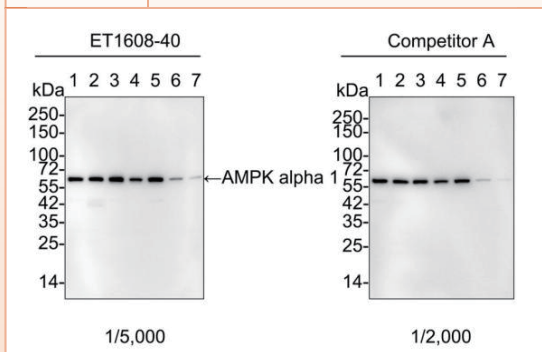
\* 产品为鼠源单抗，其余产品均为重组兔单抗

扫码查看全线金标抗体产品清单



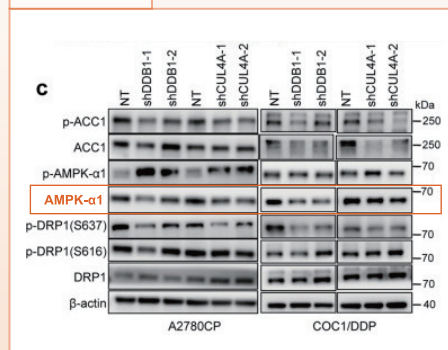
## ► AMPK alpha 1 rabbit mAb | ET1608-40

### 检测结果



Lane 1: HeLa cell lysate  
Lane 2: MCF7 cell lysate  
Lane 3: K-562 cell lysate  
Lane 4: 293T cell lysate  
Lane 5: HT-29 cell lysate  
Lane 6: L-929 cell lysate  
Lane 7: C6 cell lysate

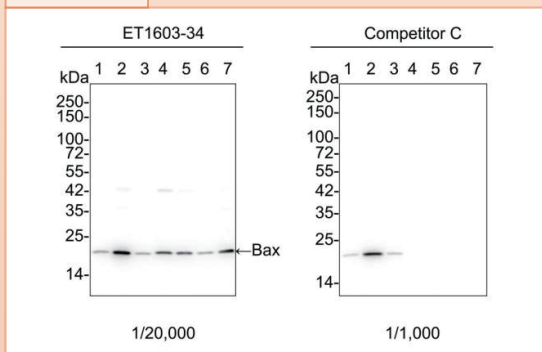
### 文献精选



Signal Transduct Target Ther. 2022 Dec 9;7(1):388.

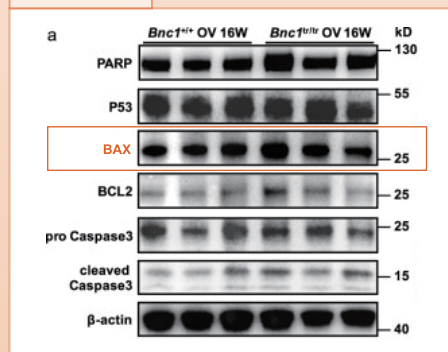
## ► Bax rabbit mAb | ET1603-34

### 检测结果



Lane 1: HeLa cell lysate  
Lane 2: MCF7 cell lysate  
Lane 3: HEK-293 cell lysate  
Lane 4: bEnd.3 cell lysate  
Lane 5: C2C12 cell lysate  
Lane 6: PC-12 cell lysate  
Lane 7: C6 cell lysate

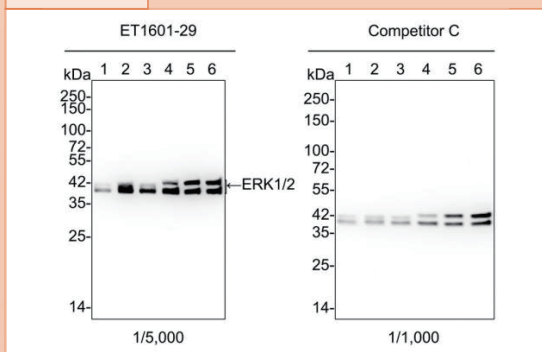
### 文献精选



Nat Commun. 2022 Oct 5;13(1):5871.

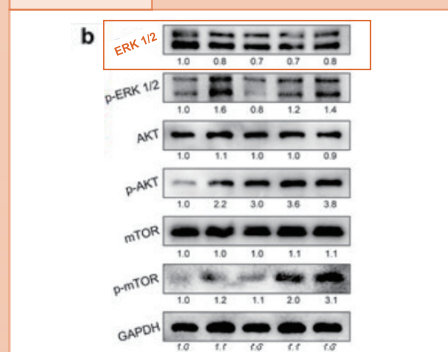
## ► ERK1/2 rabbit mAb | ET1601-29

### 检测结果



Lane 1: HeLa cell lysate  
Lane 2: Jurkat cell lysate  
Lane 3: HepG2 cell lysate  
Lane 4: NIH/3T3 cell lysate  
Lane 5: PC-12 cell lysate  
Lane 6: C6 cell lysate

### 文献精选



Adv Mater. 2024 Feb;36(6):e2307613.